

Technical Assistance at the Georgia Health Policy Center

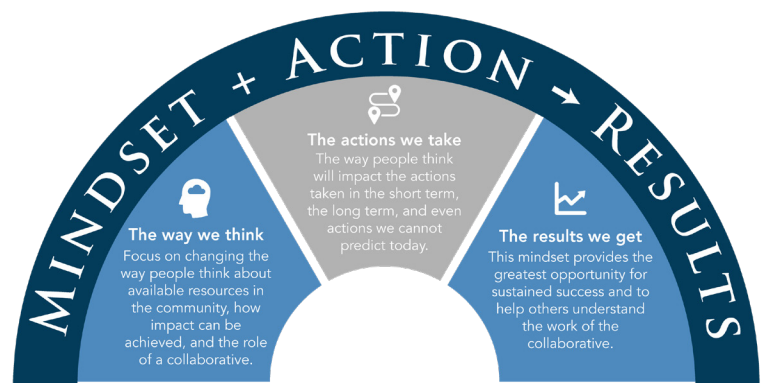
The Georgia Health Policy Center (GHPC) provides technical assistance tailored to help each community build local capacity to increase access to care and improve the health status of its residents. The center has extensive experience working on programmatic and organizational development with community collaboratives and other public and private entities implementing health-improvement initiatives.

Since its founding in 1995, GHPC has provided technical assistance that fosters community health systems development in more than 1,600 rural and urban communities across the nation. Technical assistance is one of the center's core services.

Our Approach

GHPC's technical assistance is grounded in the belief that the way you think — your mindset — influences the actions you take and, ultimately, the results you get. So, our technical assistance is focused on:

- Strategy — Selecting the most appropriate and effective approach given the unique, local context, while cultivating a strategic mindset
- Capacity — Identifying and building the necessary skills and competencies for successful implementation
- Sustainability — Engaging communities from the beginning on positioning for long-term impact



Our Principles

- Relationship-based
- Systematic, but flexible
- Technical and adaptive
- Systems-oriented
- Sustainability-focused
- Centered on continuous learning and improvement

A Framework for Sustainability

Technical assistance guided by these principles results in long-term viability of community-based health initiatives. GHPC's custom Sustainability Framework® provides a logical progression of activities to support communities in accomplishing their goals. It guides technical assistance around the areas of strategic vision, collaboration, leadership, relevance and practicality, evaluation and return on investment, communication, efficiency and effectiveness, organizational capacity, and resource diversification.

Plans Tailored to the Needs of Each Client

While the Sustainability Framework serves as the foundation for technical assistance, support is tailored to the needs of each organization and community. Technical assistance is provided by a dedicated team for the entire project period, with the added benefit of access to expertise from GHPC and its broader network.

Priority needs are reflected in individualized technical assistance action plans. The trusted, one-on-one partnership between the technical assistance provider and the site leadership enables continual assessment, identification, and response to changing needs in real time. Regular virtual and in-person support allows technical assistance to build individual, organizational, and collaborative capacities.

Focus Areas

- Collaborative development
- Community engagement
- Community health needs assessments
- Evaluation capacity building
- Leadership development
- Program development and implementation planning
- Strategic planning
- Sustainability planning

Topic Areas

- Access to care
- Behavioral health
- Benefits counseling
- Care coordination
- Chronic disease prevention
- Food and nutrition policy
- Innovations in funding, funding diversification, and funding navigation
- Network development
- Obesity prevention
- Opioid misuse, substance use disorder
- Quality improvement
- Rural health
- School-based physical and mental health
- Telehealth
- Workforce development

Project Examples

Supporting Rural Community Health Systems and Networks

GHPC has partnered with more than 1,600 grantees of the Federal Office of Rural Health Policy's programs to develop sustainable community-based services and coalitions to address rural health needs, including tailoring evidence-based practices to local culture and community context, and building community and health system capacity through workforce and partnership development. Some key areas of technical assistance include rural health network development, data sharing and integration, diversification of financial resources, network development, health care quality improvement, leadership and workforce development, evaluation capacity, strategic planning, telehealth implementation, and planning for sustainability.



Strengthening the Maternal and Child Health Workforce

GHPC supports the National Maternal and Child Health Workforce Development Center at the University of North Carolina at Chapel Hill, which develops and implements a comprehensive plan for adaptive capacity building with local and state Title V agency leaders and staff. GHPC provides subject matter expertise, technical assistance, and training in the core areas of systems integration and evidence-based decision-making. This includes applying systems thinking tools to examine trends facing the workforce and to help identify impactful solutions. GHPC also builds capacity of leaders and staff to design, deliver, and improve evidence-based interventions aligned with systems-level solutions that promote maternal and child health equity.

