



# THE GEORGIA APEX PROGRAM: SCHOOL-BASED MENTAL HEALTH SERVICES

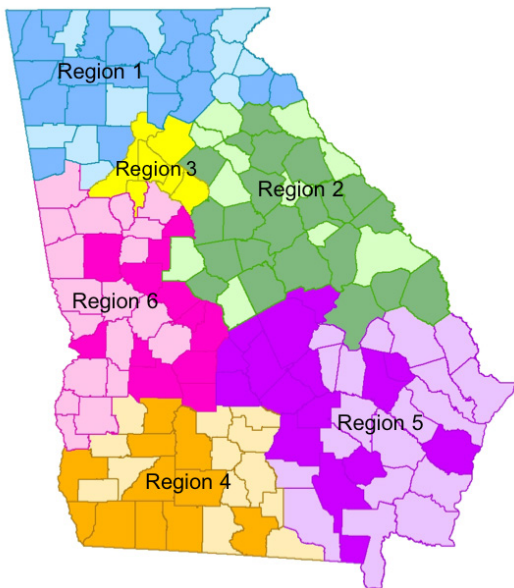
Year 3 | August 2017 to June 2018

## Program Overview

The Georgia Apex Program, funded by the Georgia Department of Behavioral Health and Developmental Disabilities, creates partnerships between community-based mental health providers and local schools to provide school-based mental health services. The program began as a pilot in August 2015 and is now in its fourth year (academic year 2018-2019).

The program's goals include increasing *access* to mental health services for children and youth, providing *early detection* of child and adolescent mental health needs, and strengthening *coordination* between community-based mental health providers and local schools.

## Georgia Apex Program Reach (Year 3)



Darker-shaded counties have at least one Apex school. As of June 2018, Apex was in 55% of Georgia counties and 56% of Georgia school districts.

## Year 3 By the Numbers

**29** funded providers

**396** schools involved; **309** schools report engaged partnership\*

**27** average number of students served per school

**288** average number of first-time students served per month

**3,464** students received mental health services, who had not previously

**15,536** referrals made for school-based mental health services

**60,318** services provided in schools

**95.9%** of parents surveyed reported being satisfied with the services their child received

\*Engaged partnership is defined as three or more months of reported data.



CENTER OF EXCELLENCE FOR  
CHILDREN'S BEHAVIORAL HEALTH  
integrating research, policy, and practice



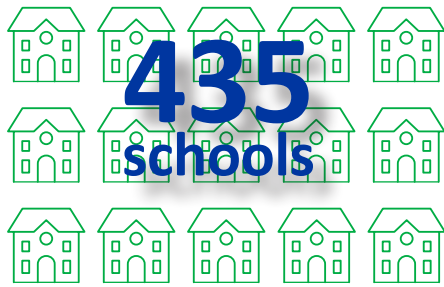
404.413.0314  
ghpc.gsu.edu  
ghpc@gsu.edu



ANDREW YOUNG SCHOOL  
OF POLICY STUDIES

# APEX GROWTH ACROSS 3 YEARS

From August 2015 to June 2018 (program Year 1 to Year 3), Apex demonstrated substantial increases in access to care based on the number of schools participating and the number of students receiving services, including first-time recipients of services. Delivered services include behavioral health and diagnostic assessments; crisis intervention; psychiatric treatment; community support; and individual, family, and outpatient services.



- 85% retention
- 191% increase from Year 1 to Year 3



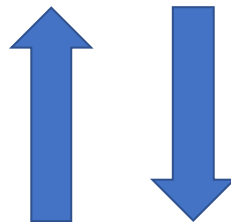
- 42% increase in students receiving first-time services from Year 1 to Year 3



- 166% increase in services provided in schools from Year 1 to Year 3

## School-Related Program Outcomes

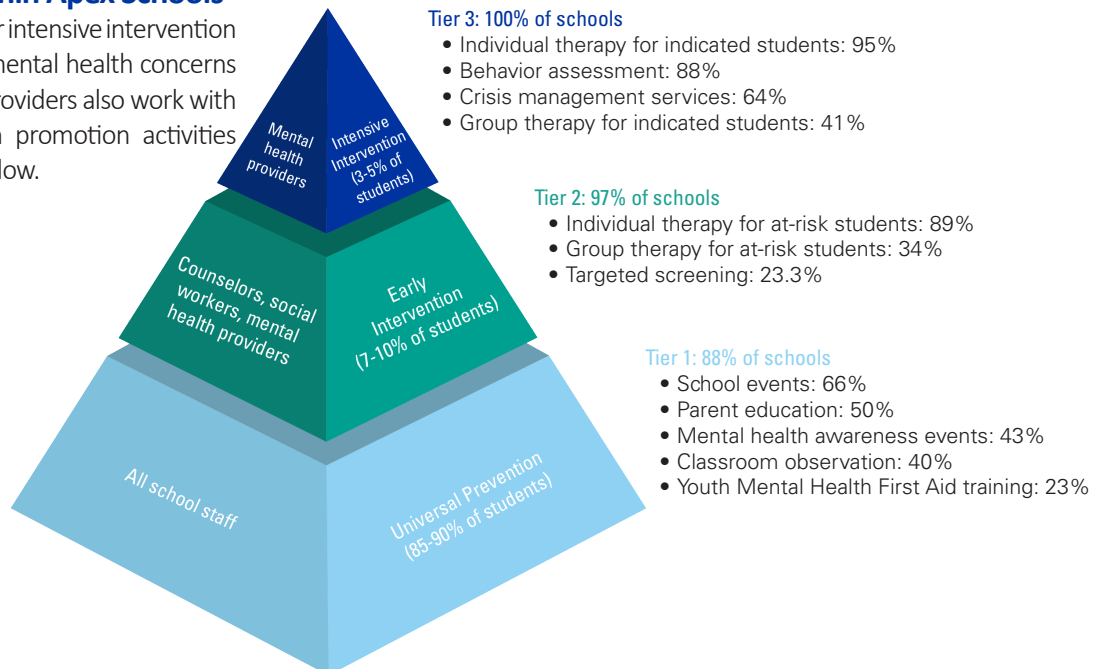
Apex and Apex + Positive Behavioral Interventions and Supports (PBIS) schools saw greater increases in average School Climate Star ratings, including Safe and Substance Free Environment scores, than the statewide average.



Apex + PBIS schools saw greater decreases in the average number of students referred to juvenile court through the school than the statewide average.

## Mental Health Promotion Within Apex Schools

Apex prioritizes addressing the need for intensive intervention for students identified as living with mental health concerns — the top tier of the pyramid. Apex providers also work with schools on additional mental health promotion activities across Tiers 1 and 2 of the pyramid below.



Adapted from: Bieber B, Hotchkiss & Palmer, B. (2007). *A Guide to School Mental Health Services*. Denver, CO: Colorado Department of Education.